



Annual Report

2024



Building on a Legacy

of Choice, Quality, and Respect

Our Mission

TURNing Dreams into Reality.



Meaning we know the people we serve well enough to know their hopes and dreams and how to help them realize these.

Our Vision

TURN Community Services will be the premiere provider of quality services for people with disabilities.



Our Values

We are dedicated to choice, quality, and respect for people with disabilities and those who support them.



Making Everyday Count





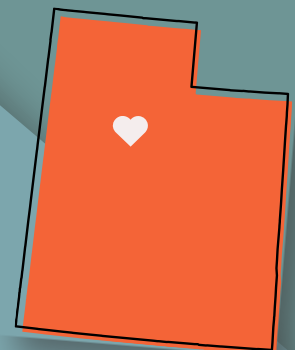
Our Story

Formerly known as Project TURN, we were founded in 1973 by a group of parents who wanted to improve program services for adult children with intellectual and developmental disabilities. TURN began by opening residential programs in Ogden and Bountiful. Individuals with disabilities could live in a traditional home setting, participate in community activities, and have an integrated, more independent social interaction experience.

More than fifty years later, TURN Community Services now provides services to more than 650 individuals with developmental disabilities in Utah. We offer a full range of services, including day programs, residential living services, art center programs, summer camps, and supported employment opportunities from Brigham City to St. George and most places in between.



Serving
Individuals and Families
throughout Utah



The TURN story reveals challenges and triumphs.

A Beautiful Story

"Painting a picture of an innovative and resilient service organization."



CEO MESSAGE

As an executive leader, I am often asked “who” and “what” is TURN. At that moment, I become a passionate storyteller, painting a picture of an innovative and resilient service organization that, for over 50 years, has transformed the lives of thousands of individuals with disabilities, empowering them to live more independent and fulfilling lives.

“The TURN Story” is an enjoyable and compelling story to tell. It is the legacy of a non-profit started by parents, providing “a life in the community” when segregation and institutionalization for people with disabilities was the norm. It is the story of fierce advocacy and an unwavering focus on inclusion, respect, and personalized supports. It includes stories of glorious achievements and successes in people’s lives, as well as extraordinary challenges and struggles that our organization and the people we serve face each day.

The TURN Story reveals challenges brought about by years of underfunding and unproductive overregulation which, in some ways, helped build corporate character and a culture of lean and determined effectiveness and unparalleled quality. It is the story of six mergers/acquisitions over the years that helped us grow to currently serve over 750 persons through a staff of about 400. It is the story of the careful management of human resources, and dedicated employees drawn by opportunities for learning, growth, and progress, and a love for, and commitment to, the people they serve.

Disability touches everyone in some way; 25% of adults in Utah, or 1 in 4, have a disability. Therefore, the story of TURN can be a relatable and familiar story of people helping people. This Annual Report tells the story of one year in the world of TURN. It illustrates our successful financial performance while tables and photographs speak to our identity and values and the many ways that we make a difference in communities and in people’s lives.

TURN Community Services stands as a beacon of hope, showing that with the right supports and mindset, anyone can thrive, regardless of their challenges. The TURN Story is a beautiful narrative about the transformative power of community, compassion, and belief in human potential.

David H. Hennessey, Ph.D.
CEO / Executive Director



TURN COMMUNITY SERVICES Management Team



Dave Hennessey
Chief Executive Officer



Phil Shumway
Chief Financial Officer



Brenda Harris
Associate Executive Director



Eliza Detherage
Director of Operations, Statewide



Eddie Fung
Director of Technology & Excellence



Selena Williams
Director of Employment Services



Alyssa DeHart
Director of Development & Communication



BOARD OF DIRECTORS

David Clark, Chairman
The Pitney Bowes Bank

Paul Allen, Treasurer
Synchrony

Sam Falsone, Secretary
Father of Person Served by TURN

David Hill, Immediate Past Chair
UPHCA

Jason Despain,
Merrick Bank

Lloyd Alexander
Business and Investment Management

Emily Ashby
Digital Marketing

Nan T. Bassett
Attorney, Kipp & Christian

Jeff Cline
Investment Management

Lenora Dale
Person Served by TURN

Kathy Hale
Ally Bank

Caleb Holt
Select Health

Barry Scholl
Attorney, Richards, Brandt, Miller, Nelson

Jim Witherspoon
Sibling of Person Served by TURN



CORPORATE & ADMINISTRATIVE OFFICES



Salt Lake City Corporate Office

423 West 800 South, Suite A-200
Salt Lake City, UT 84101
801.359.8876
P.O. Box 1287

Clinton Administrative Office

1906 West 1800 North
Clinton, UT 84015
801.820.5471

Provo Administrative Office

1921 North 1120 West
Provo, UT 84604
801.343.3900

Cedar City Administrative Office

44 West Harding Ave, Suite 101
Cedar City, UT 84720
435.586.1128

St. George Administrative Office

523 E. Sunland Drive, Suite #5A
St. George, UT 84790
435.673.5251



CORPORATE & ADMINISTRATIVE OFFICES

Salt Lake City Corporate Office

423 West 800 South, Suite A-200
Salt Lake City, UT 84101
801.359.8876
P.O. Box 1287

Clinton Administrative Office

1906 West 1800 North
Clinton, UT 84015
801.820.5471

Provo Administrative Office

1921 North 1120 West
Provo, UT 84604
801.343.3900

Cedar City Administrative Office

44 West Harding Ave, Suite 101
Cedar City, UT 84720
435.586.1128

St. George Administrative Office

523 E. Sunland Drive, Suite #5A
St. George, UT 84790
435.673.5251



TURN COMMUNITY SERVICES DEMOGRAPHICS



ETHNICITY

Not Hispanic or Latino	562	90.4%
Hispanic	33	5.3%
Unable to Determine	11	1.8%
Mexican	6	1.0%
Other Spanish Origin	3	0.5%
Puerto Rican	3	0.5%
Indian	1	0.2%
Chinese	1	0.2%
South American	1	0.2%

Total: 622

AGE

0-10	1	0.2%
11-18	58	9.3%
19-29	137	22.0%
30-39	137	22.0%
40-49	111	17.8%
50-59	85	13.7%
60-69	60	9.6%
70-79	29	4.7%
80+	4	0.6%

**Total:
622**



GENDER

Male	281	45.2%
Female	341	54.8%

Total: 622



COUNTY OF RESIDENCE

Salt Lake County	208	33.4%
Utah County	134	21.5%
Washington County	74	11.9%
Davis County	69	11.1%
Iron County	59	9.5%
Weber County	49	7.9%
Sevier County	7	1.1%
Box Elder County	4	1.1%
Summit County	3	0.5%
Wasatch County	14	2.3%
Beaver County	1	0.2%
Kane County	4	0.6%

Total: 622

SERVICE TYPE (DUPLICATED NUMBERS)

Day Program	375	33.2%
Social Security Rep Payee	150	13.3%
Residential	133	11.8%
Behavior Supports	99	8.8%
Vocational Rehabilitation	66	5.8%
Professional Medication Monitoring	59	5.2%
Family Support/Respite	52	4.6%
Supported Living	59	5.2%
Supported Employment (DSPD)	39	3.4%
Pre-Employment Transition Services	53	4.7%
Counseling	13	1.1%
Individual Day Services (DSI)	15	1.3%
Summer Camp	18	1.6%

Total: 1131



TURN COMMUNITY SERVICES FINANCIAL SNAPSHOT

REVENUES 2024

Contract revenue	\$21,141,708
Room and board	\$450,672
Private revenue	\$250,672
Public support	\$263,265
Client activities	\$70,155
United Way	\$ 376
Interest income	\$15,968
Other income	\$220,445
Gain (loss) on sale of assets	\$47,361
Total Revenue	\$22,460,622



EXPENSES 2024

Residential programs	\$10,284,746
Day training	\$7,131,800
Hourly services	1,783,406
Fundraising and other	\$111,213
Management and general	\$3,031,182
Total expenses	\$22,349,347

INCREASE IN NET ASSETS	\$111,275
-------------------------------	------------------

NET ASSETS - WITHOUT DONOR RESTRICTIONS BEGINNING OF YEAR	\$7,337,238
--	--------------------

NET ASSETS - WITHOUT DONOR RESTRICTIONS END OF YEAR	\$7,448,513
--	--------------------



Davis County Chamber

Ivy City Co



Open Text

Everest Open House



Austrian Dancers

Selene Finance



Dream Machines

The TURN Community shared its light throughout Utah
by welcoming the community to
Everest Open House
Meraki Open House
Miss Inspiration Advocacy Pageant
Joining in the Freedom Festival Parade
American Fork Parade
Springville Days

TURN was invited to Events with
Ken Garff Automotive: Utah Jazz Day at the Delta Center
Dream Machines Miss Inspiration Pre-party
Open Text-Employee Awareness day
WCF Picnic-United Way Day of Caring
Sacred Circle: ERG

Highlights of TURN were created by film crews from
UTA, Take Command, and Madison Johnson Film

Volunteers from
Eccles Art in Ogden Teva Pharmaceuticals,
Nature Human Health Utah, Selene Finance, Salt Lake Community College, Dance
festival,





Community Donors

ALLY BANK

ALBION FINANCIAL

BENEVITY

BEVERLY PATRICK

BEYOND ADVOCACY

CHOICE SUPPORTS

CITY OF OREM

CONNIE SCHOON

DAN DIXON

ERIC VANDERHOOF, MD

EVERGREEN SUPPORTS

FORESTER AND LETTHA BETTS

INFINITE SUPPORTS

JP MORGAN CHASE

JAKE TINGEY

KENNETH & JOANNE MAYNE FOUNDATION

KROGER

LKJ SUPPORT SERVICES

MORGAN STANLEY

MOUNTAIN WEST SMALL BUSINESS FINANCE

OPEN TEXT

PITNEY BOWES

QUALITY SUPPORT SOLUTIONS

REBEN REBEN, LLC

RENAISSANCE CHARITABLE

SYNCHRONY FINANCIAL

UBS Bank USA

UNITED WAY SOUTHERN UTAH

VERTICAL RAISE TRUST

WORKERS COMPENSATION FUND



Together, we change
the world!



Thank You



Making a Difference Together



ALYSSA DEHART
AHMED ELSHAFEI
AMANDA HALL
ANA BARTUS
ANGELA CHAVEZ
ANGELA HAWKINS
ANGELA LOWE
ANGELA ROWE
AUBREY CARLSON
AURORA ROWLEY
AUTUMN SMITH
ASHLEE VIGIL
BECKY BRANCH
BEVERLY PATRICK
BEVERLY SNOW
BRANDI JORGENSEN
BRANDT LATIMER
BREANNE CLEMENT
BRENDA HARRIS
B W JOSEPH
CAMILLE POWELL
CAROLYN COWDER
CASSANDRA JACOBSON
CATHY CHAMBLESS
CHARLES MCALLISTER
CHARLES MCALLISTER II
CHRIS TOPHAM
CHRISTIAN HOLETS
CINDY THOMAS
CINDY WORKMAN
COLIN COKER
CONNIE SCHOON
CONNIE WILLOUGHBY
CYNTHIA PROCTOR
D.L. GARDNER

DANIELLE JOHNSON
DAPHNE MARCHANT
DARIN ERICKSON
DAVE & DIANE HENNESSEY
DAVE HILL
DAVID CLARK
DAVID SULLIVAN
DAVID ROBERTSON
DEONE GINES
DIANE SOLOVEN
DIANE WILLIAMS
DONNA JESSE
EDDIE Y FUNG
ELAINE WILLIAMS
ELEANOR TILL
ELIZA E DETHERAGE
ELLA GUBLER
EMILY HELGREN
ERIN J FILIAT
FIONA HILDEBRANT
GLADYS BEGAYE
GREG GARDNER
HAIGEN PEARSON
HENRY NEVILLE
IRENE TAIT
JE VANDERHOFT
JANA CHIDESTER
JANAE BARNEY
JANE TOWNSEND
JARED PLATT
JAKE TINGEY
JASON DESPAIN
JASON HOWARD
JEFF CLINE
JEFF MOUNTEER

JENOVIC NGALULA
JENNIFER KLOTZ
JENNIFER SHUMWAY
JENNY MILLER
JIMMY STODDARD
JOANNE VANDERWILT
JOANNE LUDY
JODILYN WELLS
JOE ROBERTSON
JOHN & KAY FOLEY
JOHN C HAUBER
JOHN M HAUBER
JOHN JENSEN
JOELLEN SHUMWAY
JONATHAN EVANS
JULIE ANN BENTLEY
JULIE MILLARD
JULIE PORTER
JULIE VAN
JUSTIN RICE
KALYN SHUMWAY
KAREN A WILMOTT
KATHERINE DIXON
KATHERINE FELGAR
KATHLEEN CROCKER
KATHY HALE
KATIE ANN POWELL
KATELYN JOHNSON
KATIE JOHNSON
KAY AND JOHN FOLEY
KELLY PETERSON
KEN SMITH
KENNA BERTONE
KENNA D CARTER
KERRY HAWKES
KIM STANLEY
KRISTIN ERICKSON
KRISTIN WALSH

Thank You



Celebrating Individual Donors

KRISTINE NASER
 KYMIRA VITALIS
 LADAWN RINDLISBAK
 LADAWN NEJDL
 LADESS SWINSCOE
 LEATHA BETTS
 LENNY JONES
 LEONARD EVANS
 LENORA DALE
 LESLIE J LEVIE
 LESLIE GALLOWAY
 LEWIS C MCCALLUM
 LISA DEBRY
 LISA FOTHERINGHAM
 LISA JOHNSON
 LLOYD ALEXANDER
 LOU BLACK
 LYDIA ROBERTSON
 LYSA DRAKE
 MARIA BOWDEN
 MARIAH PETROSINO
 MARIANNE & DAN MADIGAN
 MARISSA HOWELL
 MARY LEE
 MARK GILBERT
 MATT JENSEN
 MAZELLE NOHR
 MEGAN TERRY
 MELISSA CASEY
 MELISSA QUIGLEY
 MICHAEL ERNST
 MICHAL ROBERTSON
 MIKE JONES
 MINDY ALLEN

NAN BASSETT
 NATHAN JONES
 PAIGE SEEKINS
 PAM MACKEY
 PAUL ALLEN
 PAULA DAIL
 PAULA DEMELLO
 PAULENA SUAREZ RYMER
 PEGGY A LAURSEN
 PHIL SHUMWAY
 POPE FAMILY
 RACHEL HAWKES
 REBECCA MOSS
 REBECCA PROCTOR
 RICHARD & DIANE HOUSTON
 RICHARD & SHELLY MULLER
 ROBERT BARRUS
 RODGER WOOD
 ROSE MONTOYA
 ROSANNA CASTRO
 RULON & KATHLEEN FOWLER
 RUTH JOHNSON
 RUZENA NOVAK
 SAHR JOHN BULL
 SAM FALSONE

SARA KIMBALL
 SCOTT BURTON
 SCOTT PACKER
 SCOTT SOULIER
 SELENA WILLIAMS
 SHARON MITCHELL
 SHEILA RATHKE
 SHIRLEY A BARNES
 SONDR A DURHAM
 STACEY MATCH
 STAN CLAWSON
 STEPHANIE VAROZ
 STEPHEN ANDERSON
 STEPHEN RATCLIFFE
 STEVEN DEHART
 SUNDEE & LARRY
 LISTELLO
 SUSAN MCCABE
 TERI FOSTVEDT
 TESSA KOBUS
 TIM MORRISON
 THOMAS ABBAY
 THOMAS DAYIN
 TOM DAY
 TRENT LEIGH
 TRENT WILKERSON
 MARE GUNDERSON
 VALORIE DODART
 VIANELLY JIMINEZ
 VICTORIA SOHN
 WALTER SICKLER
 WENDY MORGAN



**Thank You
 TURN Champions!**

Stay in Touch

www.turndreams.org

